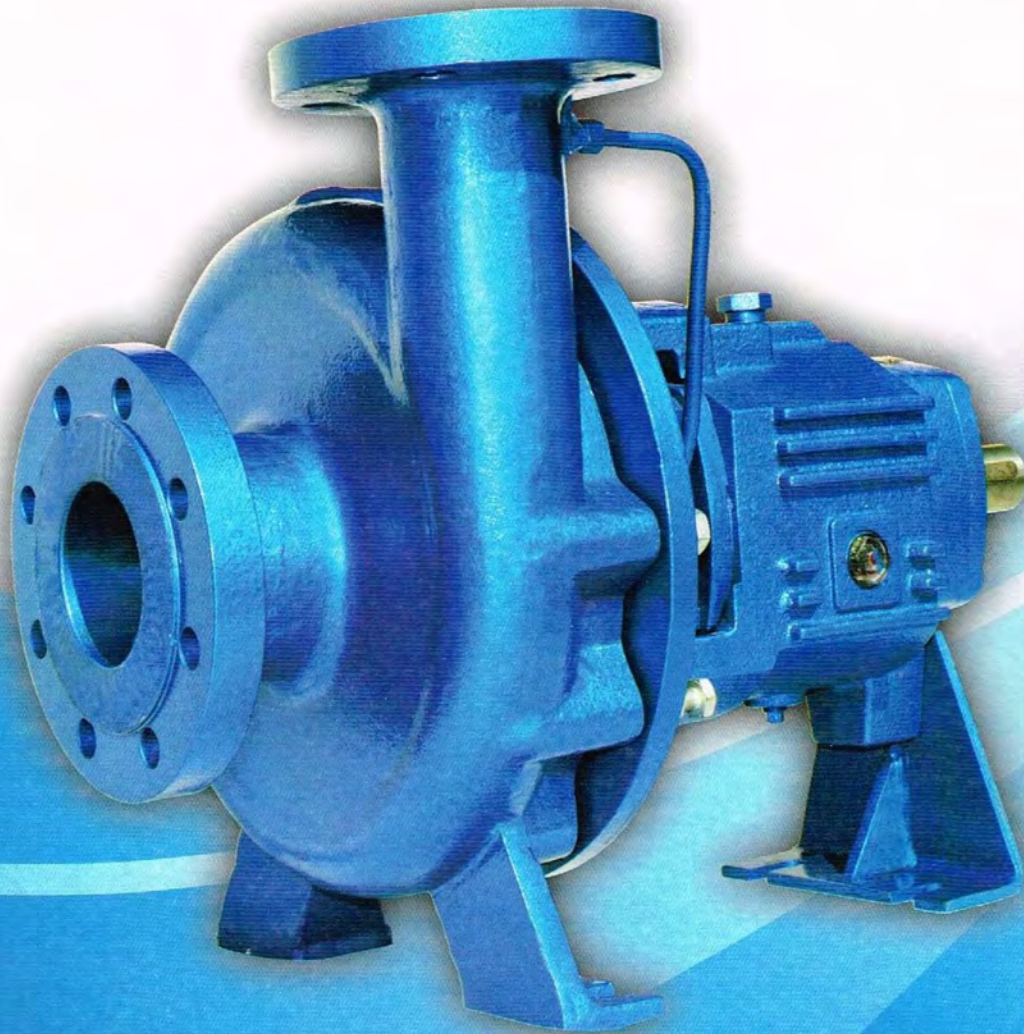


GFLUGO



DESIGN FEATURES

1. Heavy Duty, Rigid and Large Diameter Shaft
Designed for minimum deflection to increase the life of the mechanical seal

2. Double Row Deep Groove Ball Bearing
to withstand axial thrust at drive end

3. Oil Sight Glass
ensure proper oil level that is critical for bearing life

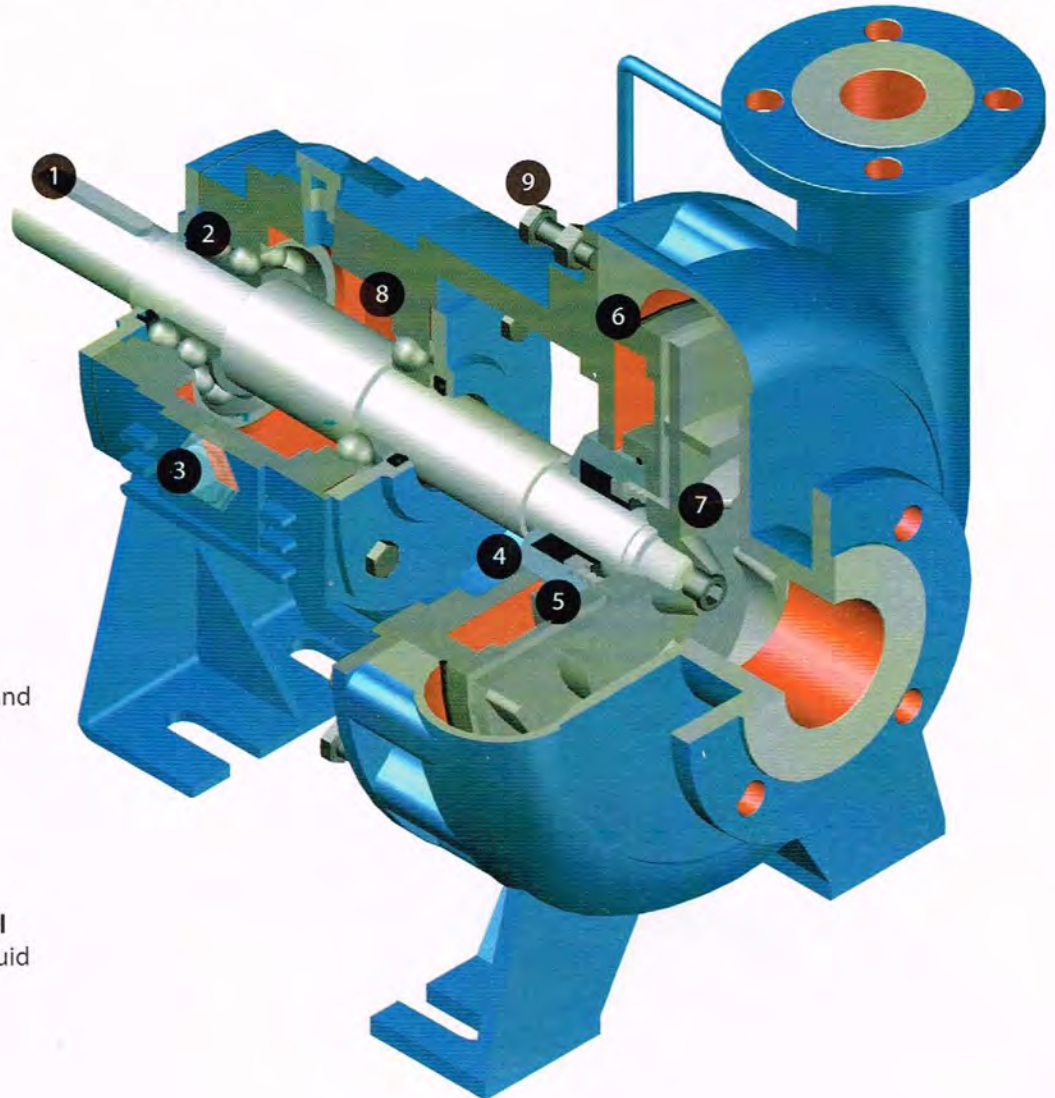
4. Large Sealing Chamber
to guarantee a better cooling and lubrication of mechanical seal

5. Standard SiC Mechanical Seal
good reliability for abrasive liquid

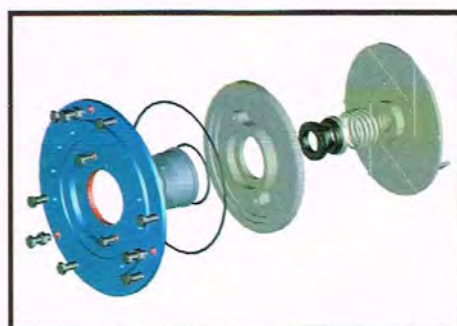
6. Casing Wear Plate
to protect pump casing, design for easy maintenance

8. Extra Large Oil Reservoir
increase oil capacity and provide better heat transfer to reduce oil temperature

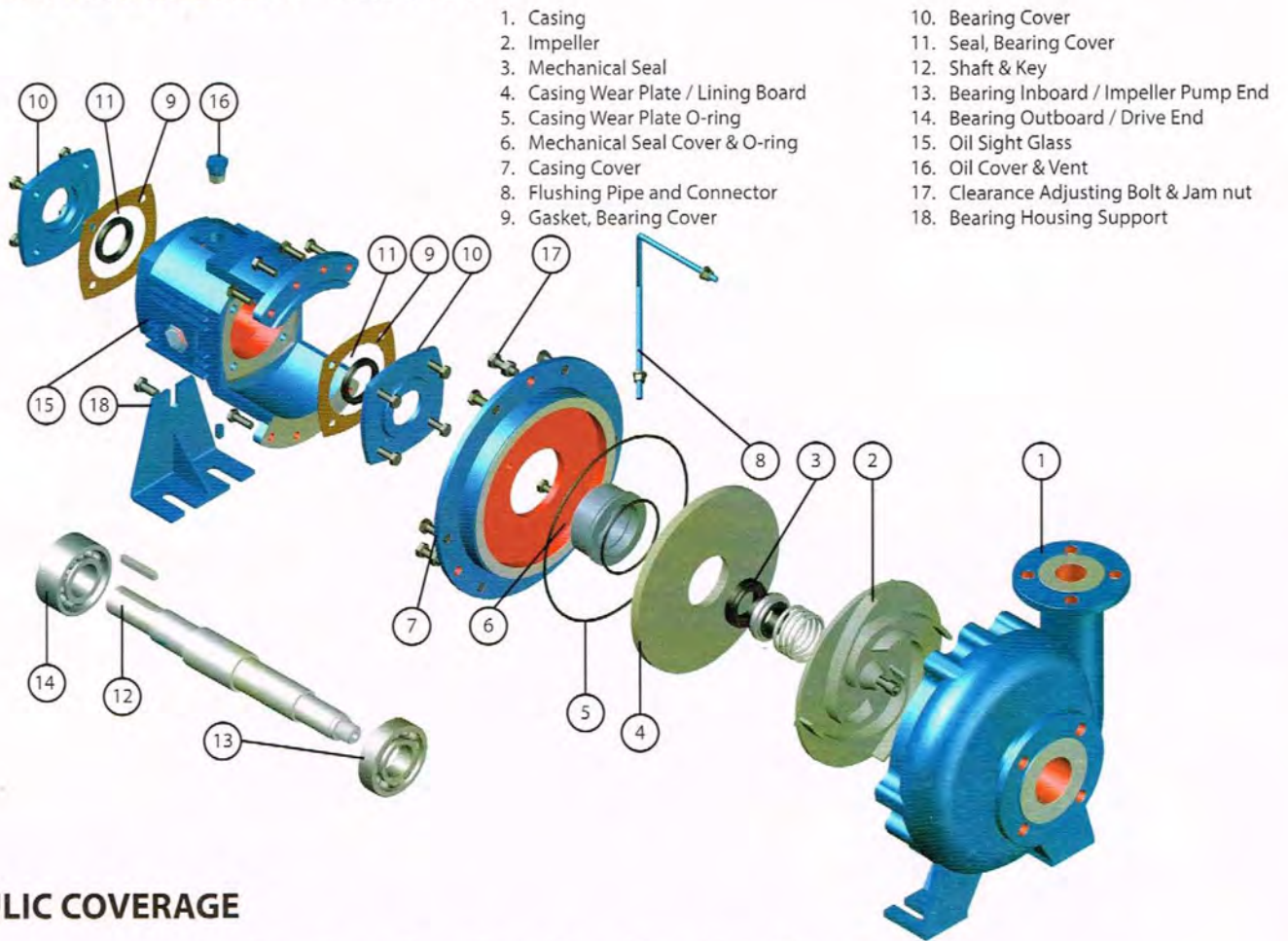
9. Impeller Adjusting Screw
to keep the clearance accuracy, extend pump performance and efficiency



7. Semi Open Impeller
with back vanes for handling liquid that contain solid particles. Back vanes will reduce solid particles in sealing chamber

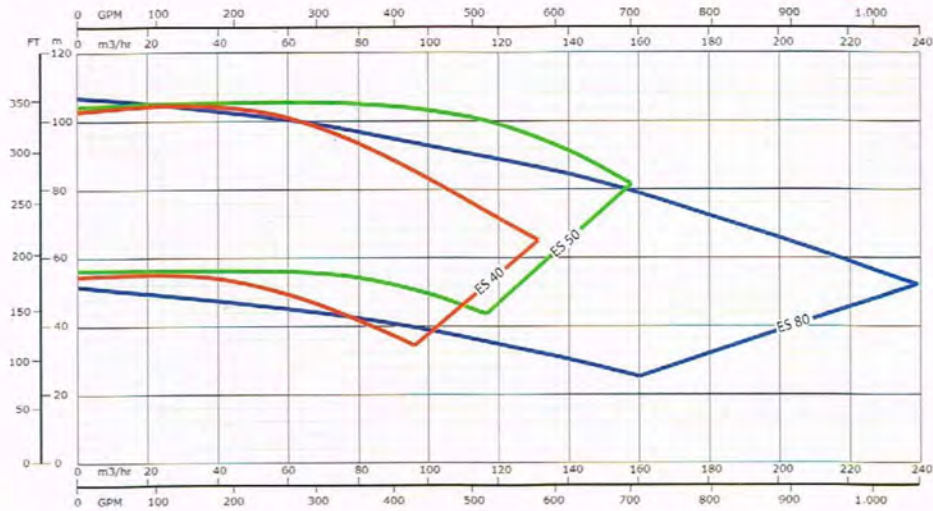


STANDARD ARRANGEMENT - PART LIST

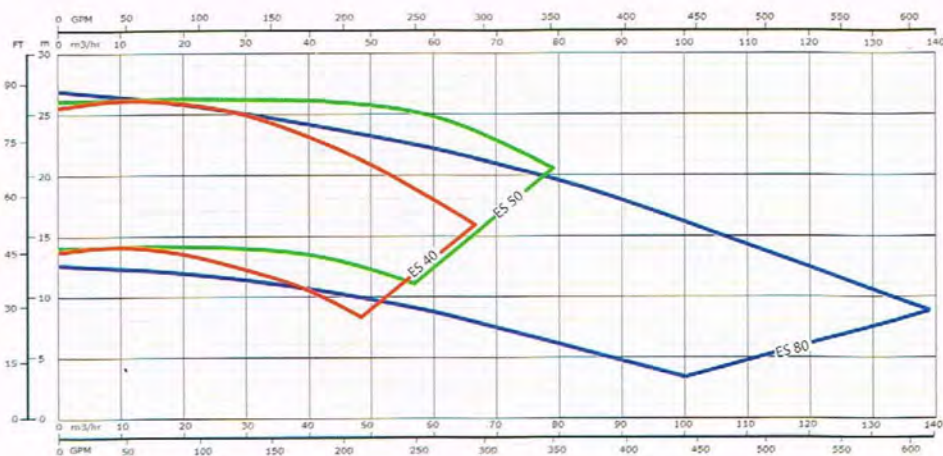


HYDRAULIC COVERAGE

2900 RPM

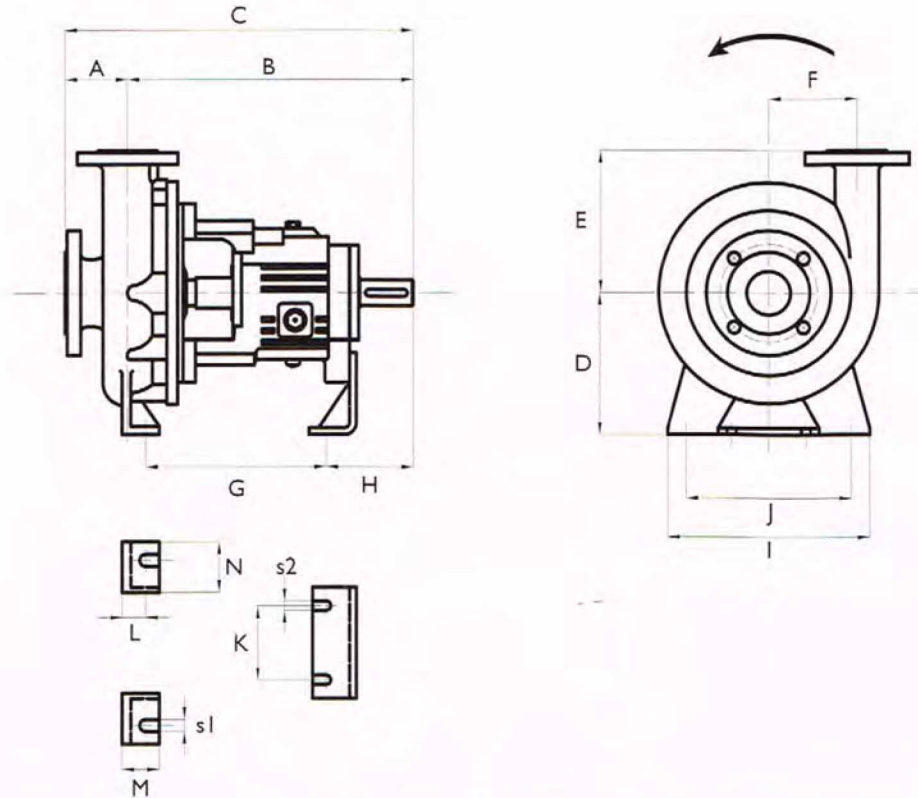


1450 RPM

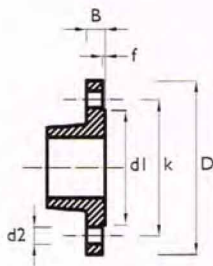


DIMENSIONS

All dimensions in mm. Not to be used for construction



MODEL	Pump Casing Dimensions								Foot Casing Dimensions										Weight Kg
	DNd	DNs	A	B	C	D	E	F	G	H	I	J	K	L	M	N	s1	s2	
FES 40	40	65	85	430	515	210	203	135	265	130	300	245	110	35	55	75	18	14	79
FES 50	50	80	115	430	545	210	215	123	265	130	300	245	110	35	55	75	18	14	82
FES 80	80	100	115	440	555	210	242	130	265	130	300	245	110	35	55	75	18	14	94



Flange Dimension								
DN	D	d1	k	b	f	d2	No Holes	Bolt
40	150	88	110	18	3	18	4	M16
50	165	102	125	20	3	18	4	M16
65	185	122	145	20	3	18	4	M16
80	200	138	160	22	3	18	8	M16
100	220	158	180	24	3	18	8	M16

Distributor: